



DISHWASHER AX-100B 230/50/1

Pass-through glass- and dishwasher. Rack size 500 mm x 500 mm and door clearance 430 mm.

1303307



SALES DESCRIPTION

Sani-Control: guaranteed disinfection.
Exclusive Hydroblade™ washing arms: maximum effectiveness.
3-stage filtering system.

Sani-Control guarantee

- ✓ GUARANTEED DISINFECTION in compliance with standard DIN 10534.
- ✓ THERMAL LOCK function: Ensures that rinsing will be carried out at the ideal temperature to disinfect the dishes.

New recessed bodywork

- ✓ Ergonomic design with rounded corners to prevent the accumulation of dirt and facilitate cleaning.
- ✓ Compact tank volume (50% water saving compared to the previous range).

Hydroblade™ washing arms

- ✓ Redesigned nozzles for greater washing performance.
- ✓ The “monoblock” design delivers durability and resistance to impacts.
- ✓ 30% savings in water consumption during rinsing compared to the previous range.

3-stage filter system: surface, tank and extraction

- ✓ Keeps the washing water in optimal conditions to maintain constant washing performance.

Designed to last

- ✓ “Flow” opening mechanism: allows the hood to be raised with less effort.
- ✓ High load capacity 43 cm: suitable for GN 1/1 and Euronorm.
- ✓ Stainless steel surface filters for greater stability and resistance during intensive use.

Warewashing, made simple

- ✓ Active Xperience: simple and intuitive use.

- ✓ Dedicated cycles: selection of the ideal washing programme using icons.
- ✓ Electronic control panel with IP65 humidity protection.

You will never WASH ALONE

- ✓ Tech-Services: our team of technicians will help you so that your machine is always ready for use.
- ✓ Design Services: tell us what your needs are and we will advise you.
- ✓ 60 years of experience and know-how at your disposal.

INCLUDES

- ✓ Peristaltic detergent pump.
- ✓ Rinse aid pump.
- ✓ 1 glasses basket.
- ✓ 1 mixed basket (plates).
- ✓ 1 small basket for cutlery.

OPTIONAL

- ☐ Overflow drainage pump. Tank water renewal by the principle of density.

ACCESSORIES

- ☐ Tables for pass-through dishwashers
- ☐ Manual water softeners
- ☐ Automatic water softeners
- ☐ 500 x 500 mm baskets
- ☐ Inserts & supplements
- ☐ Central sorting tables
- ☐ Double connection central sorting table
- ☐ Prewashing tables for pass-through and rack conveyor dishwashers
- ☐ Connecting tables for pass-through dishwashers and rack conveyors
- ☐ Reverse osmosis devices OS-140

SPECIFICATIONS

Basket dimensions: 500 mm x 500 mm
Useful height: 430 mm

Cycles: 3
Cycle duration: 120 / 180 / 210"
Production baskets / hour: 30 / 24 / 17

- ✓ Boiler capacity: 8 l
- ✓ Wash tank capacity: 25 l
- ✓ Water consumption/cycle: 3 l

Energy consumption

Water consumption/cycle (kWh): 0,23 kWh
Tank filling consumption (kWh): 1,07 kWh

Loading__

- ✓ Pump: 750 W / 1 Hp
- ✓ Tank: 2500 W
- ✓ Boiler: 6000 W
- ✓ Total loading: 6700 W

Electrical supply: 230 V / 50 Hz / 1~ (30 A)

External dimensions (W x D x H)

- ✓ Width: 648 mm (Wide with handle: 725 mm)
- ✓ Depth: 756 mm (Bottom with handle: 835 mm)
- ✓ Height: 2000 mm / 1508 mm

Wash temperature: 65°C



WARE WASHING
PASS-THROUGH WAREWASHERS

product sheet
updated 20/03/2025



DISHWASHER AX-100B 230/50/1

Pass-through glass- and dishwasher. Rack size 500 mm x 500 mm and door clearance 430 mm.

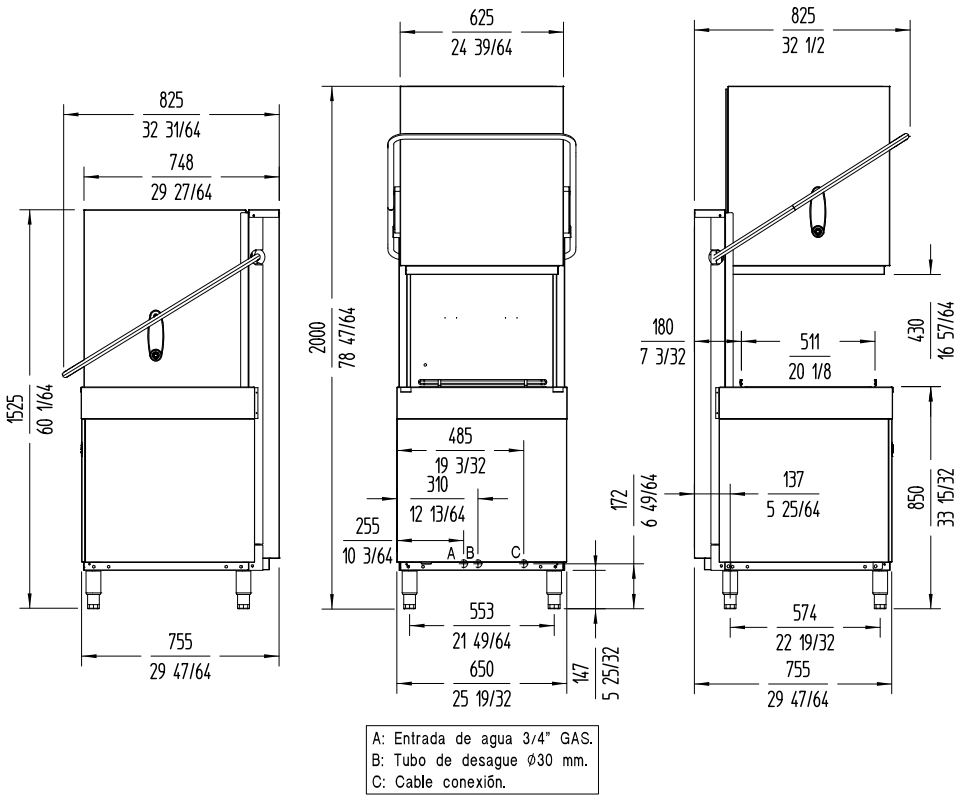


1303307

Rinse temperature: 85°C
Net weight: 103 kg
Noise level (1m.): <70 dB(A)
Crated dimensions

760 x 860 x 1530 mm
Gross weight: 114 kg

WARE WASHING
PASS-THROUGH WAREWASHERS



sammic.co.uk
Food Service Equipment Manufacturer
Unit 2, Trevanah Road
Troon Industrial Park
LE4 9LS - Leicester
uksales@sammic.com
Tel.: +44 0116 246 1900



Project	Date
Item	Qty
Approved	

product sheet
updated 20/03/2025