

# SINGLE PAN ELECTRIC FRYER 600mm

E60E

- 22kW high performance single pan fryer
- Easy clean flat bar heating elements
- Digital display temperature control with 3 product timers
- Easy clean stainless steel open pan with 10 year limited warranty
- 35L oil capacity
- 3 standard or 2 large basket capacity
- 32mm (1¼") drain valve
- Rear rollers
- Stainless steel exterior
- Easy service
- Fully modular



E60E

## Overall Construction

- Stainless steel pan
- Bull nose welded 1.5mm 304 stainless steel
- Splashback 1.2mm 304 stainless steel
- Side panels 1.2mm 304 stainless steel
- Double skin door with 0.9mm 304 stainless exterior
- Vitreous enamelled control panel
- Hinge out counterbalanced heating elements
- 32mm (1¼") drain valve
- 63mm dia. heavy-duty 1.2mm 304 stainless steel adjustable legs at front and two rollers at rear
- 3 standard baskets and stainless steel lid supplied standard

## Controls

- Digital display electronic thermostat
- Thermostat range 88-190°C
- 3 programmable product timers with countdown display and alarms
- Straight or compensating temperature cook time control
- Heating and basket drop displays
- Programmable melt cycles
- Fail-safe over-temperature safety cut-out
- Element tilt switch for heating cut-out on element lift
- Safety start switch

## Cleaning and Servicing

- Open stainless steel pan with hinge out elements for easy clean
- Easy clean basket support bar
- 32mm (1¼") drain valve for effective draining
- Easy clean stainless steel exterior
- Access to all controls from front of unit

# SINGLE PAN ELECTRIC FRYER 600mm

E60E

## Specifications

**Production rate**  
40kg/hr

### Pan Size

Oil capacity 35L (50lbs shortening)  
Width 515mm  
Length 390mm  
Oil frying depth 95mm

### Baskets

3 nickel plated wire baskets  
140mm W x 335mm D x 145mm H  
Optional 2 nickel plated wire baskets  
210mm W x 335mm D x 145mm H

### Elements

2 x 11kW flat bar stainless steel heating elements

### Electrical requirements

22kW, 400-415Vac, 50/60hz, 3P+N+E  
L1 30.5A  
L2 30.5A  
L3 30.5A

### Electrical connection

41mm from RH side, 70mm from rear and 485mm from floor

### Dimensions

Width 600mm  
Depth 812mm  
Height 915mm  
Incl. splashback 1085mm

### Nett weight

74kg

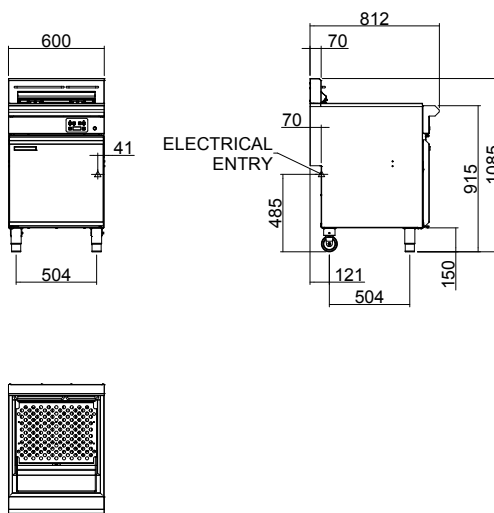
### Packing data

0.7m<sup>3</sup>, 99kg  
Width 670mm  
Depth 900mm  
Height 1255mm

### Options

Adjustable feet at rear  
Filtamax Filtration System  
Extra standard baskets  
Extra large baskets  
Side splash guards  
Joining caps  
Castors

E60E



[www.blue-seal.co.uk](http://www.blue-seal.co.uk)

United Kingdom  
[blue-seal.co.uk](http://blue-seal.co.uk)  
Blue Seal Limited  
Unit 67  
Gravelly Business Park  
Gravelly  
Birmingham B24 8TQ  
England  
Telephone 0121-327 5575  
Facsimile 0121-327 9711  
[sales@blue-seal.co.uk](mailto:sales@blue-seal.co.uk)

Australia  
[moffat.com.au](http://moffat.com.au)  
Moffat Pty Limited  
740 Springvale Road  
Mulgrave  
Victoria 3170  
Australia  
Telephone +613-9518 3888  
Facsimile +613-9518 3833  
[vsales@moffat.com.au](mailto:vsales@moffat.com.au)

New Zealand  
[moffat.co.nz](http://moffat.co.nz)  
Moffat Limited  
45 Illinois Drive  
Izone Business Hub  
Rolleston 7675  
New Zealand  
Telephone +64 3-983 6600  
Facsimile +64 3-983 6660  
[sales@moffat.co.nz](mailto:sales@moffat.co.nz)

International  
[moffat.com](http://moffat.com)  
[international@moffat.co.nz](mailto:international@moffat.co.nz)



Designed and manufactured by



ISO9001

All Blue Seal products are designed and manufactured by Moffat using the internationally recognised ISO9001 quality management system, covering design, manufacture and final inspection, ensuring consistent high quality at all times.

In line with policy to continually develop and improve its products, Moffat Limited reserves the right to change specifications and design without notice.



Copyright Moffat Ltd.  
UK.BS.01.23

an Ali Group Company



The Spirit of Excellence