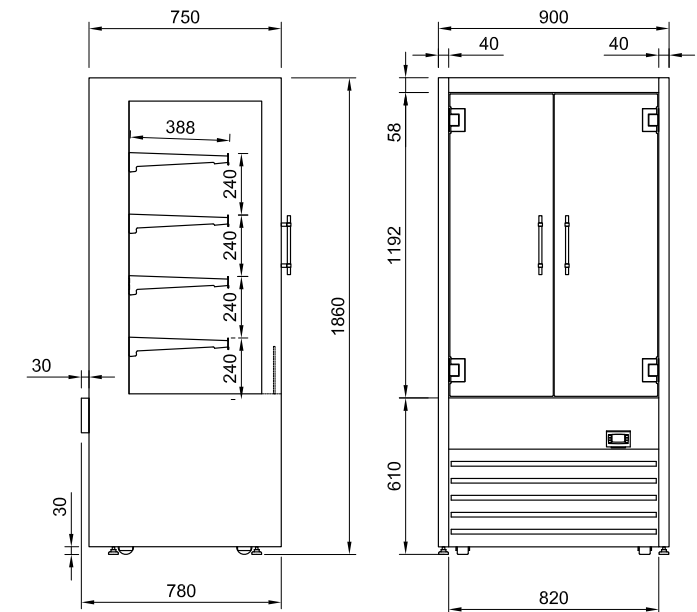
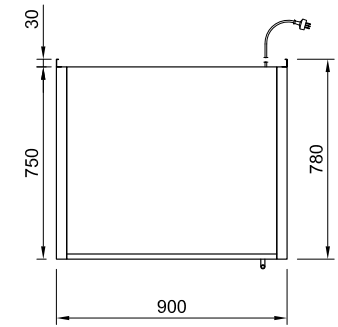




- Stainless steel construction
- Four Stainless steel adjustable shelves
- Ticket strips on shelves
- Shelf mounted air curtains
- Under shelf and canopy LED lights
- Forced air circulation
- Removable front grill panel
- Roll in on castors
- Hinged glass front doors



Prior to installation see, installation guidelines documents

CABINET DIMENSIONS & SPECIFICATIONS

MODEL	CABINET				SHELVING	OPERATING TEMP	SHELF	BASE TRAY	DISPLAY	FREQUENCY	OPERATING CURRENT	ENERGY CONSUMPTION	CONNECTION ELECTRICAL POWER CORD 2200MM		VOLTAGE	PACKED FOR SHIPPING			
	LENGTH [MM]	DEPTH [MM]	HEIGHT [MM]	WEIGHT [KG]									DEG C	W X D		W X D	M ²	Hz	Amps
DTGHT9	900	780	1860	178	4 + BASE	75 -85	810 X 388	820 x 460	1.63	50/60 HZ	10.5		15 AMP LEAD ONLY	15 AMP LEAD ONLY	220-240V	1000	830	2030	215

Maximum shelf load weight 15kg spread evenly



AutoCAD



Revit

