



PLH60 - Lincat Panther Light Duty Series Free-standing Hot Cupboard - Static - W 600 mm - 1.5 kW

The compact Panther Light Duty Series Hot Cupboard, which can also be used for warming plates, comes fully insulated for enhanced energy-efficiency, while there's also an adjustable thermostatic control to meet food safety regulations.

- ✔ Ideal for warming plates and for holding food safely and effectively at the desired temperatures
- ✔ Fully insulated for enhanced energy-efficiency
- ✔ Adjustable thermostatic control to meet food safety regulations
- ✔ Compact, space saving design

Specifications

Summary		Power and Performance	
Brand	Lincat	Total Power kW	1.50
Range	Panther	Temperature Range °C	30-90
Series	Light Duty	IP Rating	IP24
Power Type	Electric	Temperature Control	Mechanical
Unit Type	Free-standing		
Available in UK Only	No		
UK Warranty	2 Years Parts and Labour Warranty		
Export Warranty	Contact your local dealer		
GTIN	5056105103653		

Key Specifications

Number of Shelves included	3
Number of Shelf Positions	3
Heated Base	Yes
Heated Gantry	No
Static or Mobile	Static

Weights and Dimensions

Unit Height (External) mm	900
Unit Width (External) mm	600
Unit Depth (External) mm	600
Height (Internal) mm	700
Width (Internal) mm	555
Depth (Internal) mm	530
Shelf Dimensions Width mm	550
Shelf Dimensions Depth mm	530
Net Weight Kg	48

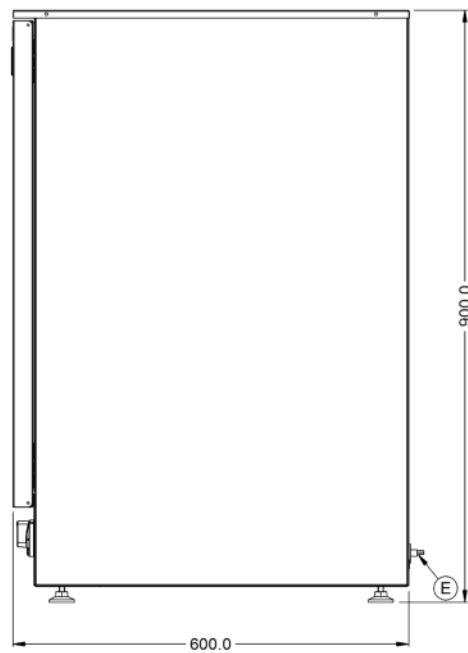
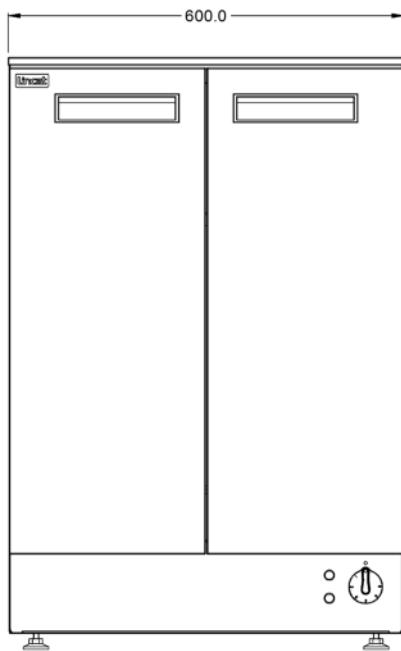
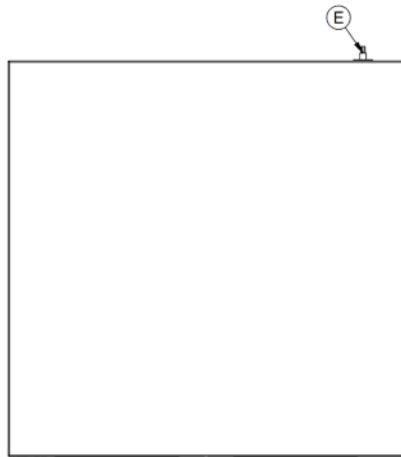
Supply Connections

Requires Installation	No
Requires Electrical Supply	Yes
UK 3 Pin Plug	Yes
Requires Hardwiring	No
Electrical Supply Rating Watts	1,500
Single Phase Amps	6.5
Single Phase Voltage	230

Shipping

Packed Weight Kg	52.8
Packed Height cm	110
Packed Width cm	78
Packed Depth cm	78

Technical Picture



Lincat Limited

Whisby Road,
Lincoln, LN6 3QZ,
United Kingdom

Company No: 2175448

A member company of



Customer Care

Tel: +44 1522 875500
Email: care@lincat.co.uk

Export Customers

Tel: +44 1522 875536
Email: export@lincat.co.uk

Opening Hours

Monday – Friday:
8.30am – 5pm