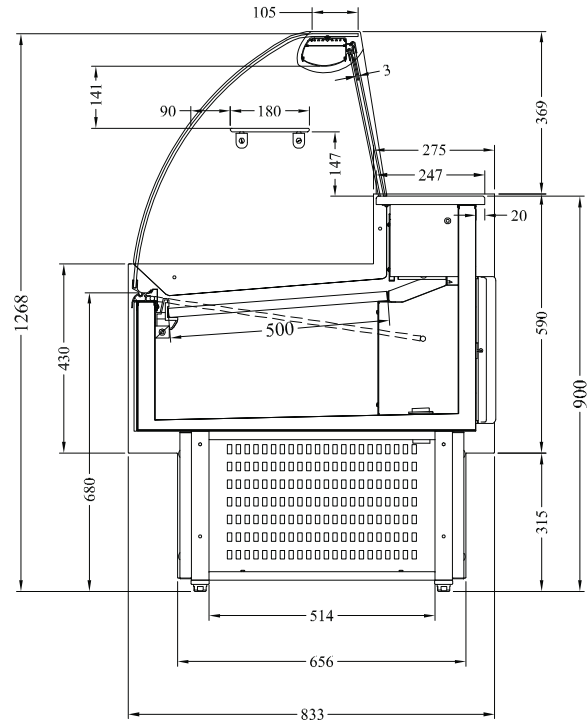


Project
Location
Item#
QTY

Model: A20C	Coldkit Araya A20C 2 Metre, Curved Glass, Serve Over Counter
----------------	---



Technical Drawing



Key Features

Construction

Available Options

- +1°C to +10°C temperature range
- Digital temperature control
- Refrigerated under storage
- Ambient intermediate shelf
- Lightweight design, easy to install
- Digital temperature control
- Digital temperature display
- Illuminated display deck
- 500mm deep deck
- Switchable static or fan assisted cooling
- Fog resistant glass
- Suitable up to 30°C ambient
- R404a refrigerant

- Painted steel construction
- Curved glass design

- Any RAL colour front panel
- Perspex rear doors
- Stainless steel deck
- Step deck

Technical Data

Model	A20C
Capacity	337 Litres
Display Area	1.28m ²
Intermediate shelf dimensions	1902 x 180
External Dimensions	Width = 2000 Depth = 833 Height = 1268
Interior Finish	White
Exterior Finish	Grey / White
Rear Storage Doors	2
Internal Lighting	✓
Internal Lighting Type	Flourescent
Light switch	✓
Light switch position	Externally mounted
Temperature control	Digital
Temperature control position	External
Temperature range	+1° to +10°c
Refrigerant	R404a

Approvals

Available At

Document #

