



Locally manufactured

Our machines are Made in Britain (Staffordshire) meaning shorter lead times on delivery, parts and support.



2 Wash Programs

The G500DUO Standard (2 minute) and Light (1.5min) cycles allow for maximum output without compromising wash quality.



LCD display

The G400DUO enhances user functionality by displaying rinse and wash tank temperatures.



Double skinned sides and door

Allows for quieter operation and reduced heat loss.



Water Board (WRAS) compliant

All Duo machines are fully compliant with essential Water Board regulations.



Advanced Customer Features

Adjust rinse aid and detergent settings, priming of chemical pumps and set water softener to match local water hardness levels (WS models only).



Colour Coded Display

Amber flashing - Machine heating
Blue - Machine in cycle
Green - Machine ready



Operational Data monitoring

Our machine constantly measures all cycles, heating and errors providing useful data for improving efficiencies.

Machine Features:

1 400mm x 400mm basket	2 Built-in chemical pumps	3 Drain pump	4 Rinse Booster Pump	5 Energy saving standby mode
6 Stainless steel dual wash filter system	7 Temperature interlock - guarantees hot rinse	8 Assisted self-clean	9 Easily removable components	

Hydraulic specifications

Water supply connection

Minimum allowed supply water pressure

Required water flow rate

Minimum incoming water temperature

Maximum incoming water temperature

Gravity drain height (from machine base)

Pumped drain height (from machine base)

Drain size

G400DUO

G3/4" (3/4" BSP)

0.5 bar G400DUO model only
2.0 bar G400DUOWS model only

11 L/min G400DUO model only
4 L/min G400DUOWS model only

4°C

55°C

40 mm G400DUO model only
N/A G400DUOWS model only

540 mm

Ø40 mm

Electrical specifications

Standard Set-up

Amps Required

Standard Operating Voltage

Total Connected Load

13A (1 phase)

220-240V / 1N~ / 50Hz

2.85kW

Optional Set-up

Amps Required

Standard Operating Voltage

Total Connected Load

13A (3 phase)*

380-415V / 3N-/50Hz

6.58kW

Optional Set-up

Amps Required

Standard Operating Voltage

Total Connected Load

30A (1 phase)*

220-240V / 1N~ / 50Hz

6.58kW

Performance

Wash tank element

Rinse tank element

Wash tank capacity

Rinse tank capacity

Rinse water consumption at 3 bar

Theoretical maximum racks/hours

Wash tank temperature

Rinse tank temperature

Wash pump power

Rinse pump power

2.00kW

6.00kW

10 litres

6.5 litres

3.00 L/cycle

40

55°C

70°C

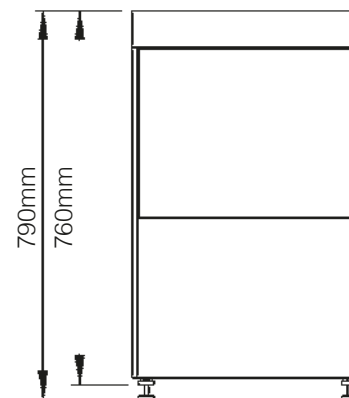
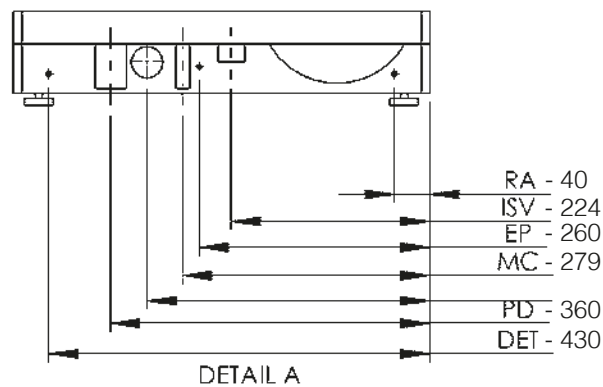
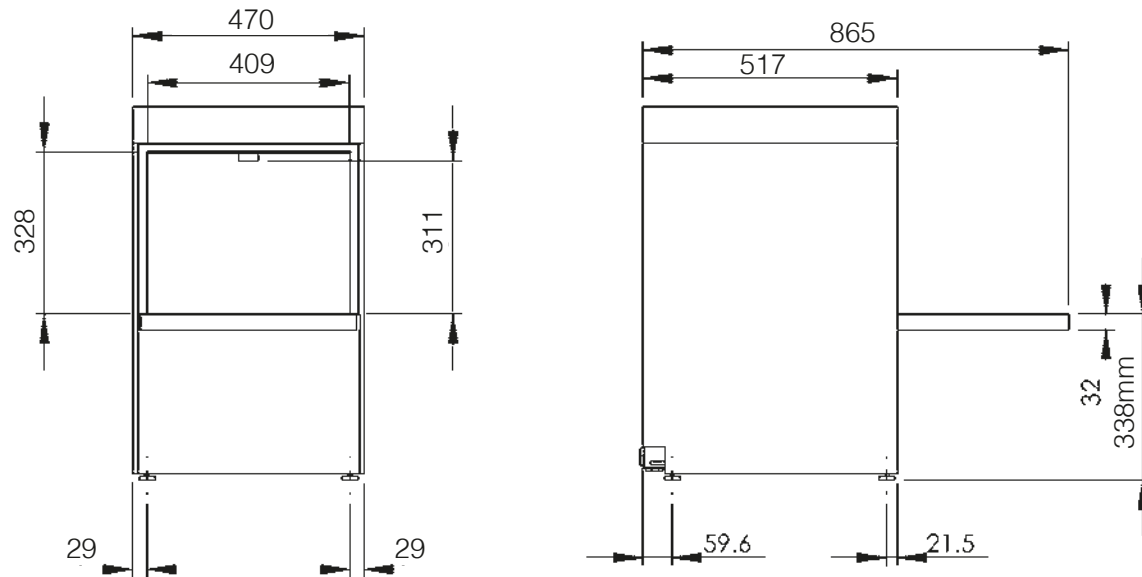
0.25 kW

0.10kW

Please Note: G400DUOWS Specification as above.

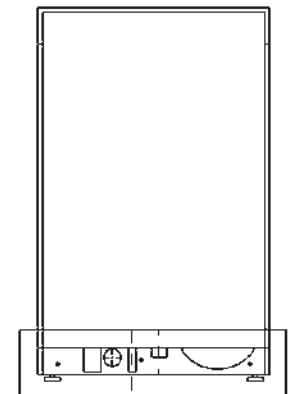
***Optional Electrical Configurations :** An optional 13amp 3ph or 30amp 1ph configuration is available on all 400 models at an additional price.

Mechanical Specifications



Additional Info:

	G400DUO
Wash water temperature	55°C
Glass washer rinse temperature	70°C
Noise level	Under 70dB
Empty weight	40.3kg
Fully Loaded weight	46.8kg
Packed weight	49.8kg G400DUO model 51.9kg G400DUOWS model



Dimensions (mm):

470 (W) x 760 (H) (790 max) x 517 (D)

Description	Symbol	Radius from machine (m)
Rinse aid tube	RA	3
Inlet solenoid value	ISV	1.8
Mains electrical cable	EC	1.3
Pumped waste water outlet	PD	1.5
Equipotential bonding stud	EP	-
Detergent tube	DET	3

Please Note: All dimensions in mm

Contact:

Tel: +44 (0)844 225 9250

Email: sales@classeq.co.uk

Classeq Ltd, Roebuck Way,

Knowlhill, Milton Keynes MK5 8WH

www.classeq.co.uk

CLASSEQ
Warewashing Made Simple.